

The Dovecote

Cold Arbor Road, Sevenoaks, Kent TN13 2BL



SALTERS HEATH

BUSINESS CENTRE



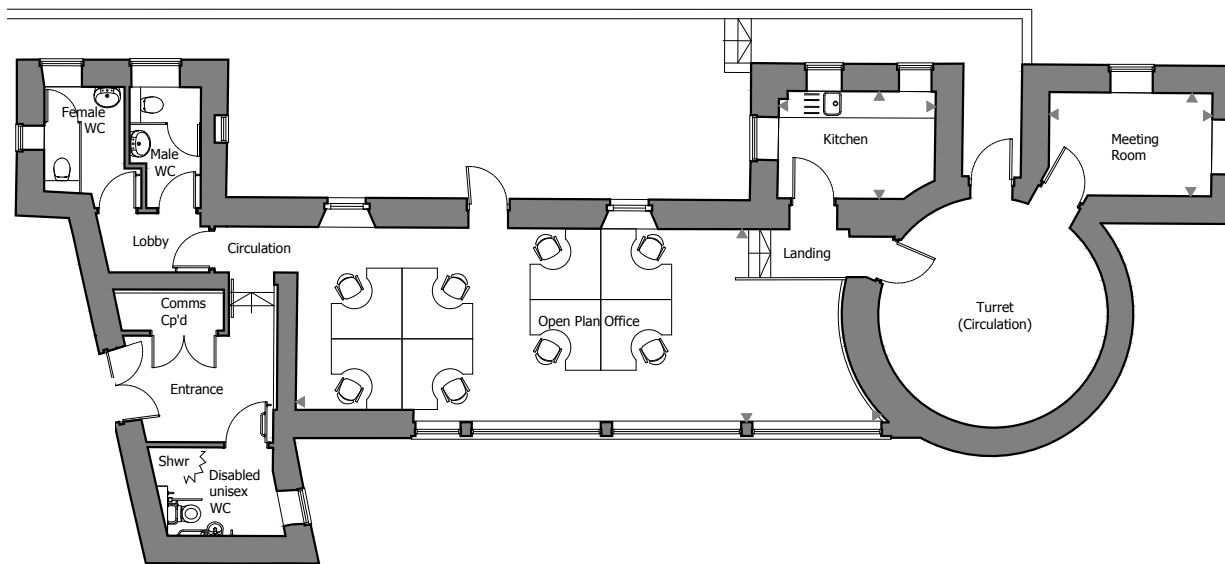
Computer generated image

The Dovecote

As its name suggests, The Dovecote incorporates the site's historic and very distinctive original dovecote building, with its curved walls, conical roofline and arched windows. This open plan office spans 610 sq ft, easily accommodating eight workstations, with a separate 93 sq ft meeting room and the double height turret providing a circulation space. In addition is an impressive vaulted entrance lobby, two cloakrooms, a wheelchair-accessible wet room-style shower with WC and provision for a separate 91 sq ft kitchen.

An enviable connection to the rural environment and an abundance of natural light is granted at The Dovecote, thanks to three sets of full height sliding glass doors. These can be opened to access a paved patio area, creating a wonderful inside-outside space and providing natural ventilation.

Floor Plan



Specification

- Open plan office measuring 610 sq ft
- Separate 93 sq ft meeting room
- Provision for kitchens/provision for a kitchen areas
- Shower facilities
- Fibre broadband
- Customisable access flooring system
- Comfort cooling
- Air recovery system
- Choice of floor coverings (subject to build stage)
- Parking
- Electric car charging points
- Bike storage
- Gated development
- Landscaped central courtyard
- Alarm and audio entry system
- BREEAM 'Very Good'
- EPC's available on request



01732 789 700

info@saltersheath.com
www.saltersheath.com